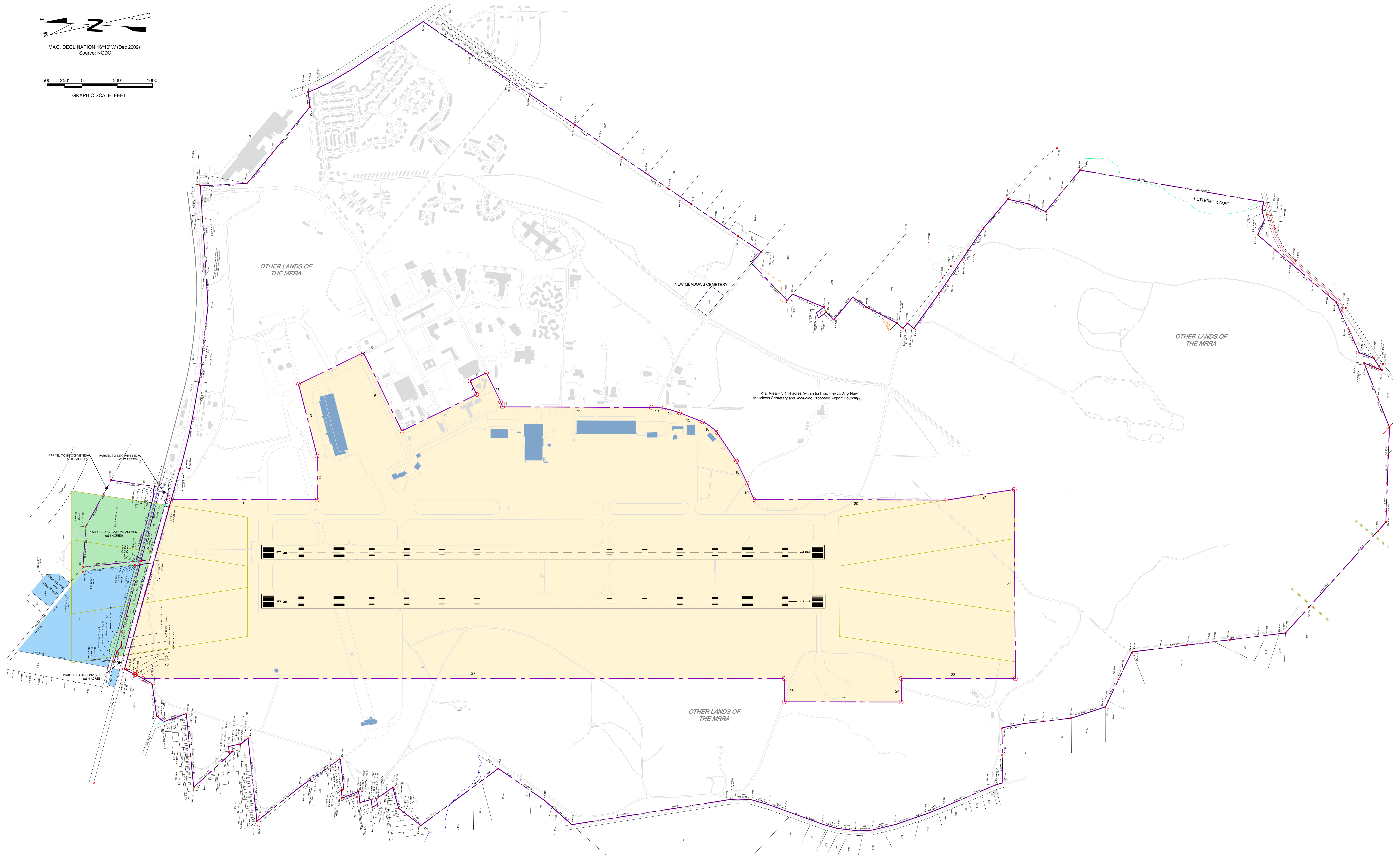
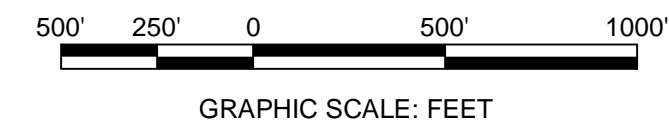


MAG. DECLINATION 16°10' W (Dec 2009)
Source: NGDC



Total Area = 3,144 acres (within to lines - excluding New Meadows Cemetery and including Proposed Airport Boundary).

AIRPORT BOUNDARY MAP DATA							
TYPE OF DATA	POINT	NORTHING	EASTING	DISTANCE / ARC LENGTH	COURSE	RADIUS	DELTA
Line	1	99910.2506	606663.3557	2075.3672	S 4° 3' 49" E		
Line	2	88840.1012	605840.4282	622.7667	N 85° 48' 28" E		
Line	3	88805.6294	606461.5286	1085.8496	N 71° 21' 14" E		
Line	4	89223.2405	607462.0031	985.7104	N 30° 9' 0" W		
Arc	5	88370.8839	607957.1421	280.460		54.3957	295° 25' 0"
Line	6	88314.6692	607942.3888	1200.0897	S 59° 44' 57" W		
Line	7	87710.0788	606065.7184	1182.2709	S 30° 7' 37" E		
Line	8	86684.9209	607500.6287	214.2962	N 50° 11' 50" E		
Line	9	86794.6588	607884.6952	261.0396	S 30° 31' 55" E		
Line	10	86664.8131	607817.3077	458.9242	S 59° 36' 32" W		
Line	11	86337.6436	607451.4431	76.7487	S 65° 44' 47" W		
Line	12	86306.1172	607351.4688	2116.3944	S 4° 0' 55" E		
Line	13	84194.9178	607499.6668	178.1769	S 0° 17' 42" E		
Arc	14	84016.7424	607505.5846	11463.0732		1880.7721	352° 50' 27"
Line	15	83789.4853	607462.1955	348.4326	S 17° 16' 38" W		
Arc	16	83455.8195	607348.4158	3562.1084		609.09	335° 4' 47"
Line	17	83233.2144	607208.6709	462.7697	S 51° 54' 22" W		
Line	18	82929.2002	606620.9609	344.2725	S 59° 47' 55" W		
Line	19	82756.0176	606523.3187	253.2049	S 63° 39' 51" W		
Line	20	82643.6875	606296.3943	2742.662	S 4° 2' 11" E		
Line	21	79897.6262	606460.4462	973.2081	S 13° 2' 43" E		
Line	22	78959.6752	606709.1330	2690.6087	S 85° 30' 59" W		
Line	23	78748.9513	604026.7889	1623.0846	N 4° 9' 54" W		
Line	24	80367.7493	603998.9044	331.7614	S 85° 49' 48" W		
Line	25	80343.6249	603578.0214	1663.8105	N 4° 6' 25" W		
Line	26	82003.1649	603458.8622	330.0741	N 85° 43' 37" E		
Line	27	82027.7595	603788.0187	9124.3648	N 4° 9' 54" W		
Line	28	91126.0264	603126.3187	118.7004	N 24° 40' 58" E		
Line	29	91236.7952	603175.3041	12.0007	N 1° 9' 9" E		
Line	30	91248.7628	603175.5450	164.0007	N 24° 7' 9" E		
Line	31	91398.4779	603242.5627	2498.9503	S 78° 44' 1" E		

LEGEND	
EXISTING	DESCRIPTION
	AIRPORT BOUNDARY
	OTHER LANDS OF THE MRRRA
	EXISTING AVIGATION EASEMENT
	PROPOSED AVIGATION EASEMENT
	RUNWAY PROTECTION ZONE (RPZ)

- Notes:
- The proposed Airport Boundary (as shown) is presented in the following geodetic coordinates.
 - Horizontal datum: (State Plane) - NAD 83 - 1901 Maine East (1983)
 - Vertical datum: NAVD 88
 - The proposed Airport Boundary (as shown) is approximately 928 acres.
 - The underlying base map (as shown) was provided by the MRRRA and is not dated.
 - The Other Lands of the MRRRA is property data provided by the U.S. Navy.

Disclaimer:
This Airport Boundary Map is a graphic illustration for airport planning and discussion purposes only. This map should not be used for conveyances or for any other legal use without the signature and seal of a licensed professional engineer or land surveyor.

ENGINEER'S SEAL

1700 Market Street, Suite 1700
Philadelphia, PA 19103
Tel: 215.399.4300
Fax: 215.399.4300

AECOM

1000 Walnut Street, Suite 1000
Philadelphia, PA 19103
Tel: 215.399.4300
Fax: 215.399.4300

Hoyle, Tanner & Associates, Inc.
1000 Walnut Street, Suite 1000
Philadelphia, PA 19103
Tel: 215.399.4300
Fax: 215.399.4300

BRUNSWICK AIRPORT
BRUNSWICK, MAINE

AIRPORT PROPERTY MAP

SCALE: 1" = 500'

DATE: 10/02/2008

DESIGNED BY: BAO
CHECKED BY: JDM

REVISIONS

NO.	DATE	DESCRIPTION

PROJECT NO.: 391101
FILE NUMBER: 2814-PL601-PMAP
DRAWING NO.:
SHEET 9 OF 9